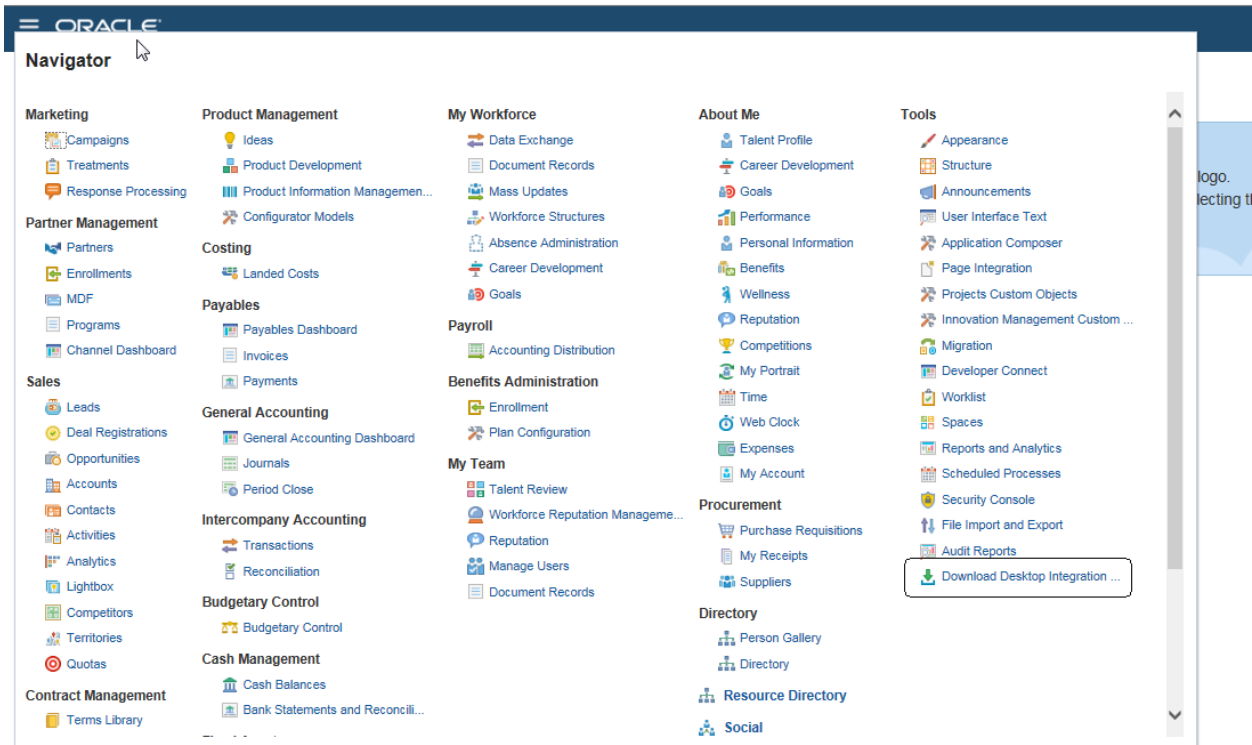


# Installing ADFdi

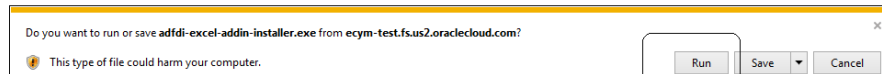
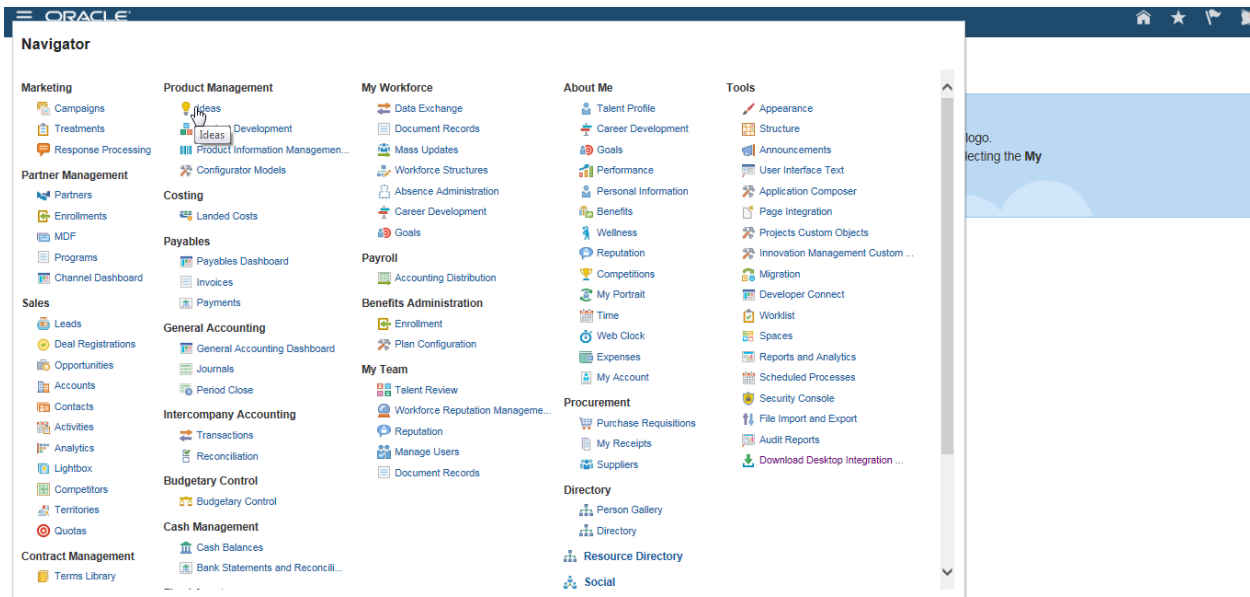
First shutdown all Office Applications and any other application that are active.

To install ADFdi, login to the Oracle Cloud ERP application.

Download the Desktop Intgeration.



And run the program to install the software.



Make sure you have install privileges on the machine you are installing or it will not install correctly. The software will take you through a series of steps to install the software.

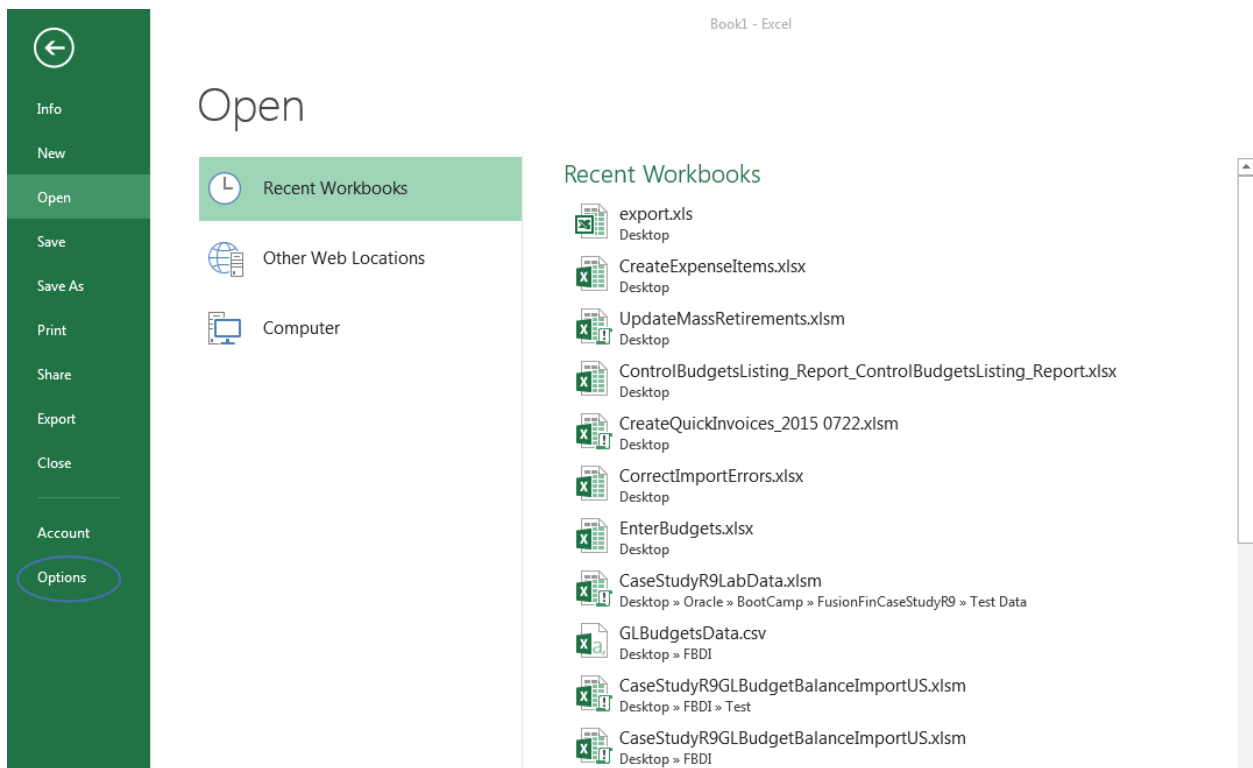
Once it is installed, do the following steps.

# Excel Settings for ADFdi and SmartView

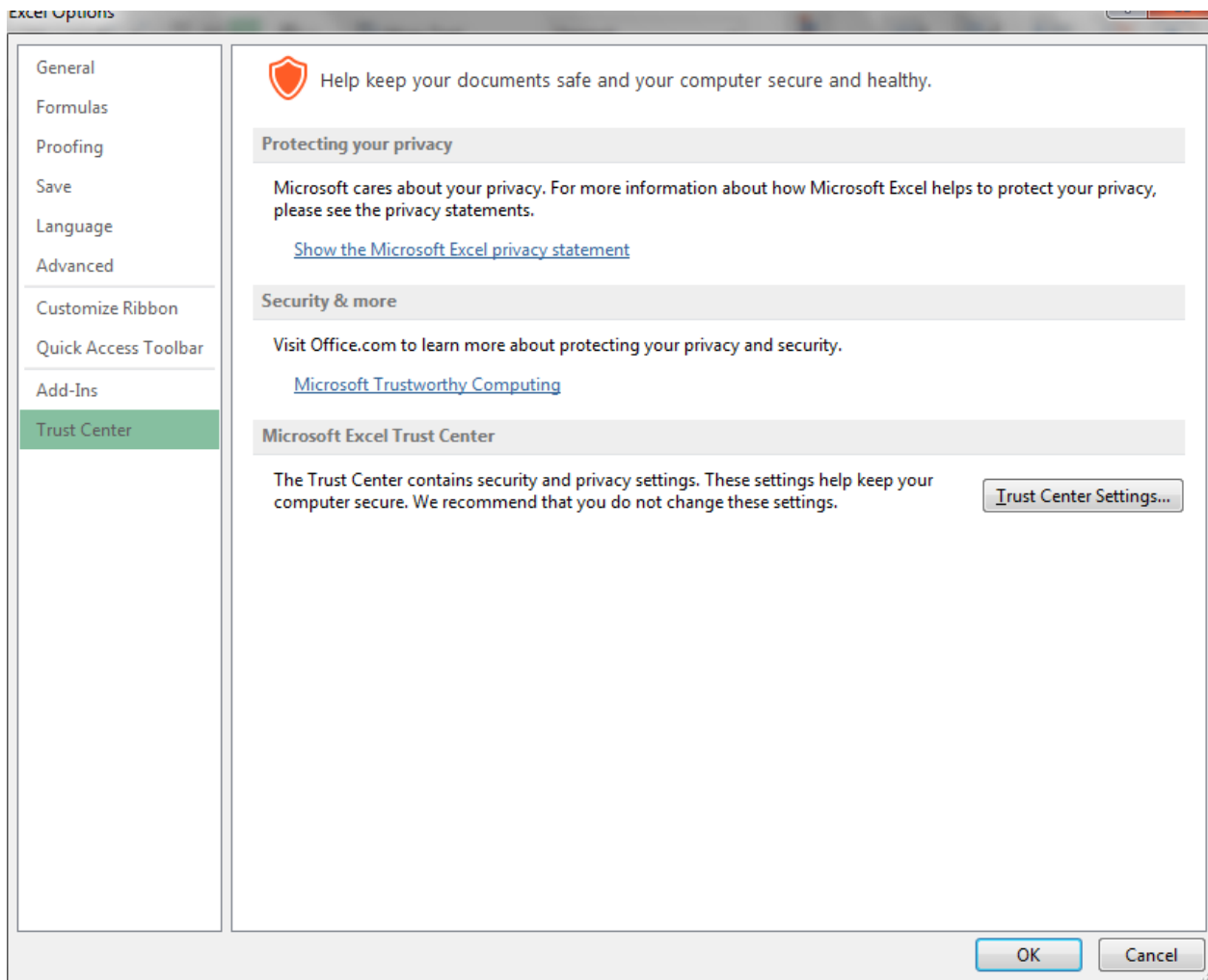
Step1:

Excel Security Options and VB Options

Open an empty excel spreadsheet. Navigate to Excel Options.

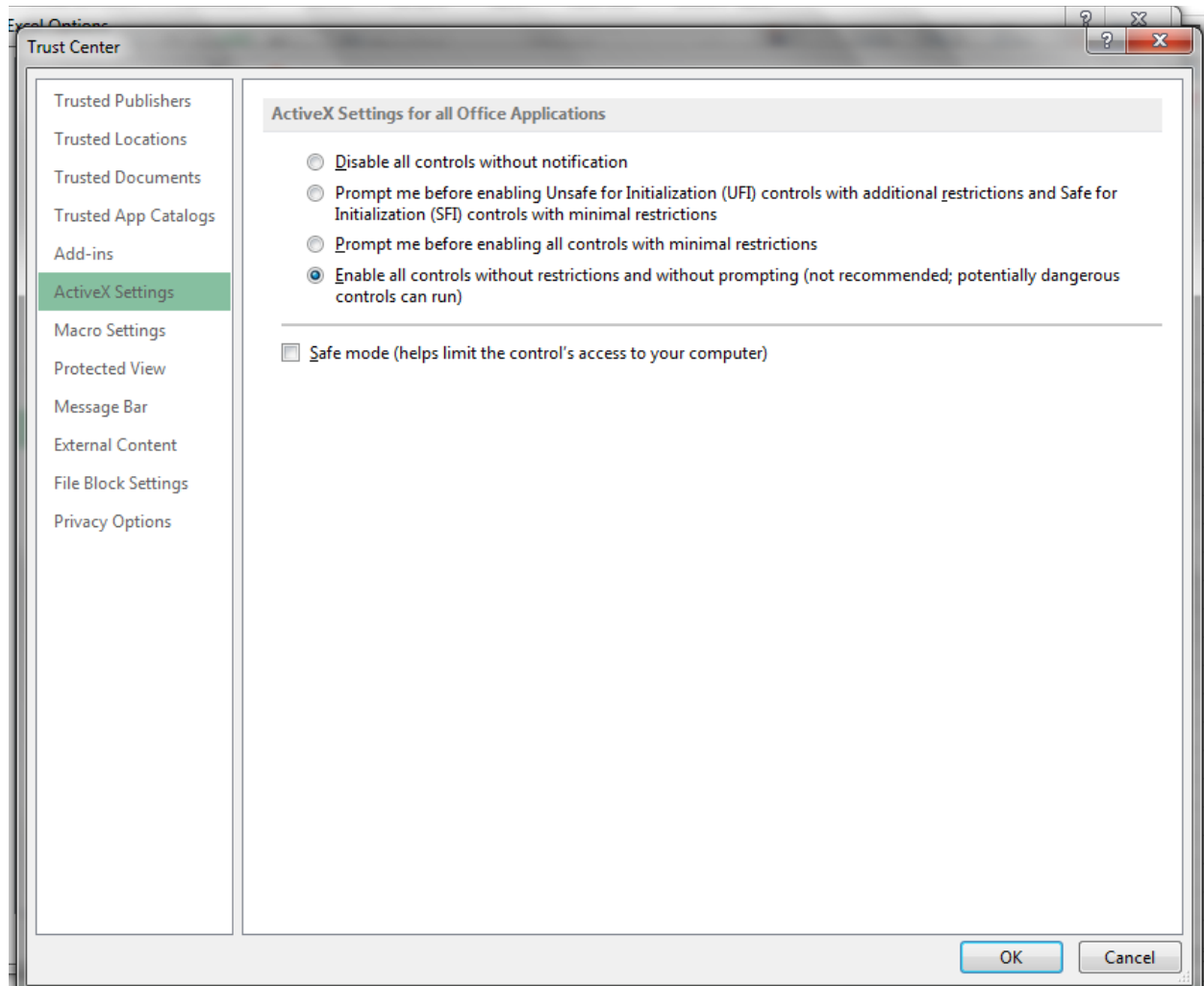


Click on Options. Navigate to Trust Center.

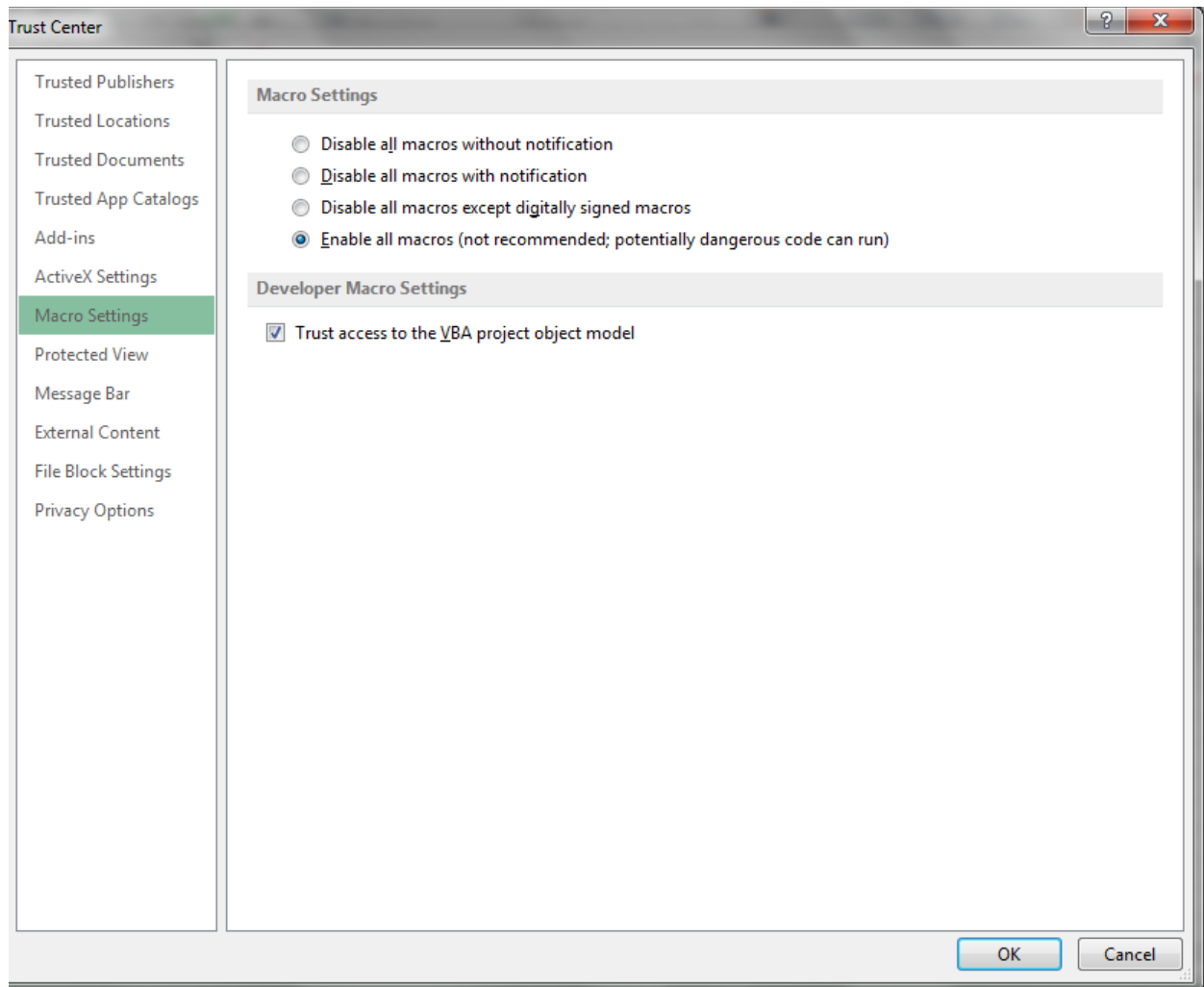


Click on Trust Center Settings.

Navigate to Active X settings and make sure it looks like the below.

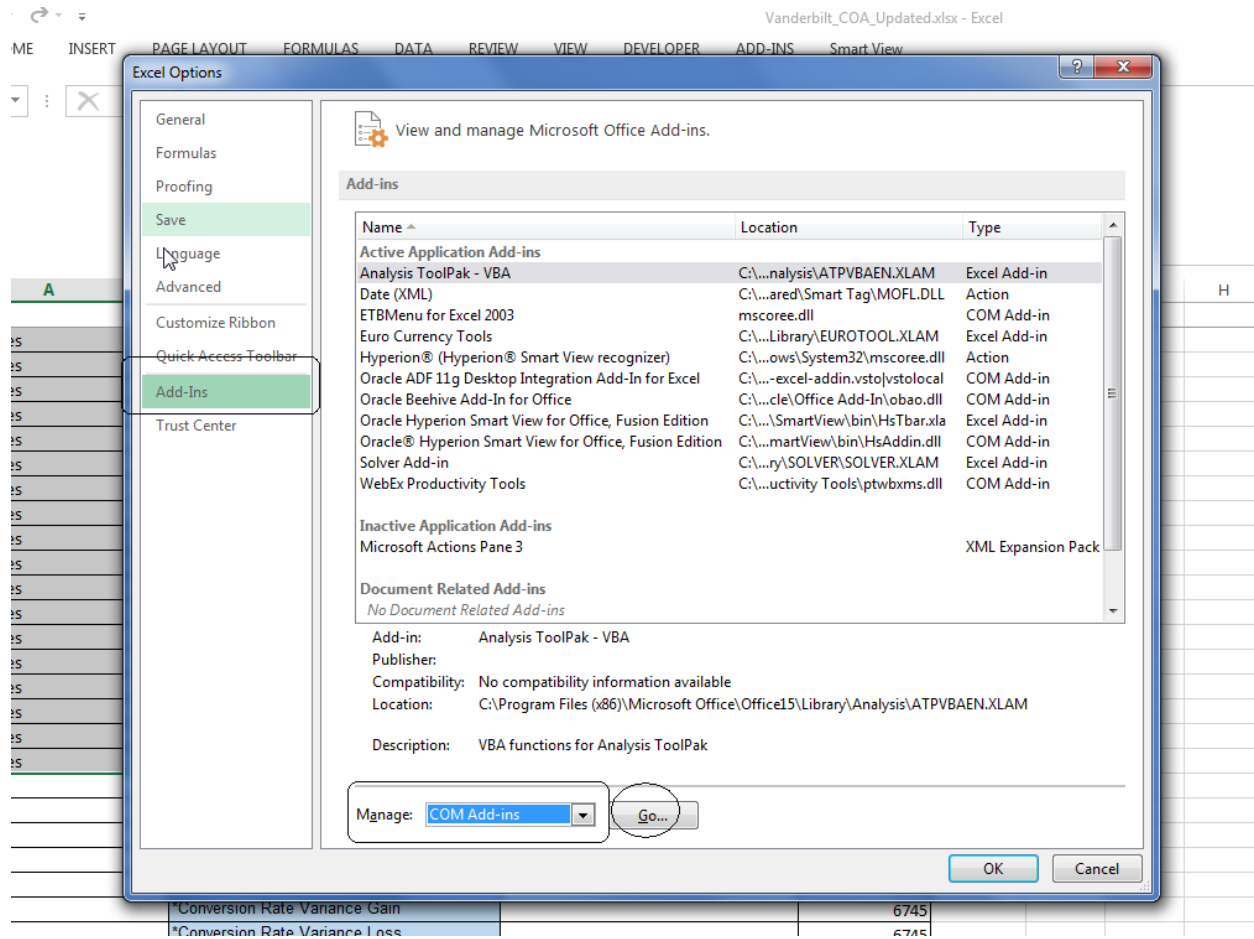


Navigate to Macro Settings and make sure it looks like this.

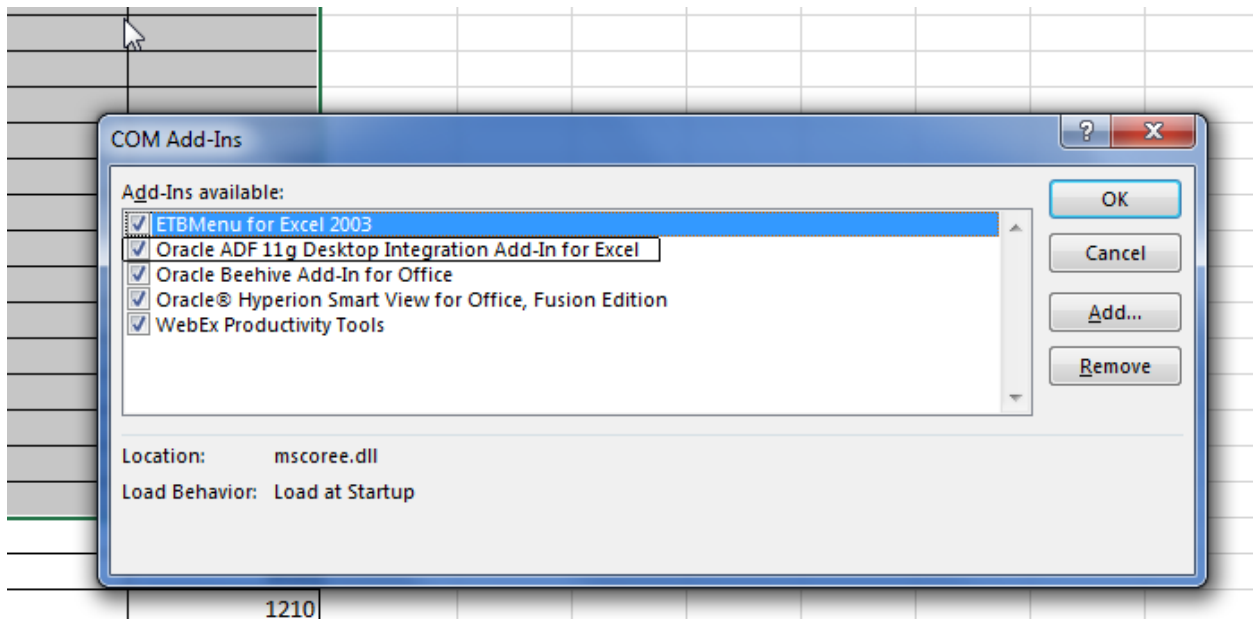


Step2:  
Check for Add- Ins

Navigate to Excel Options and click on Add-Ins and select Com Add-Ins and select Go.



And check if this is enabled.



If Oracle ADF 11g Desktop Integration is enabled.

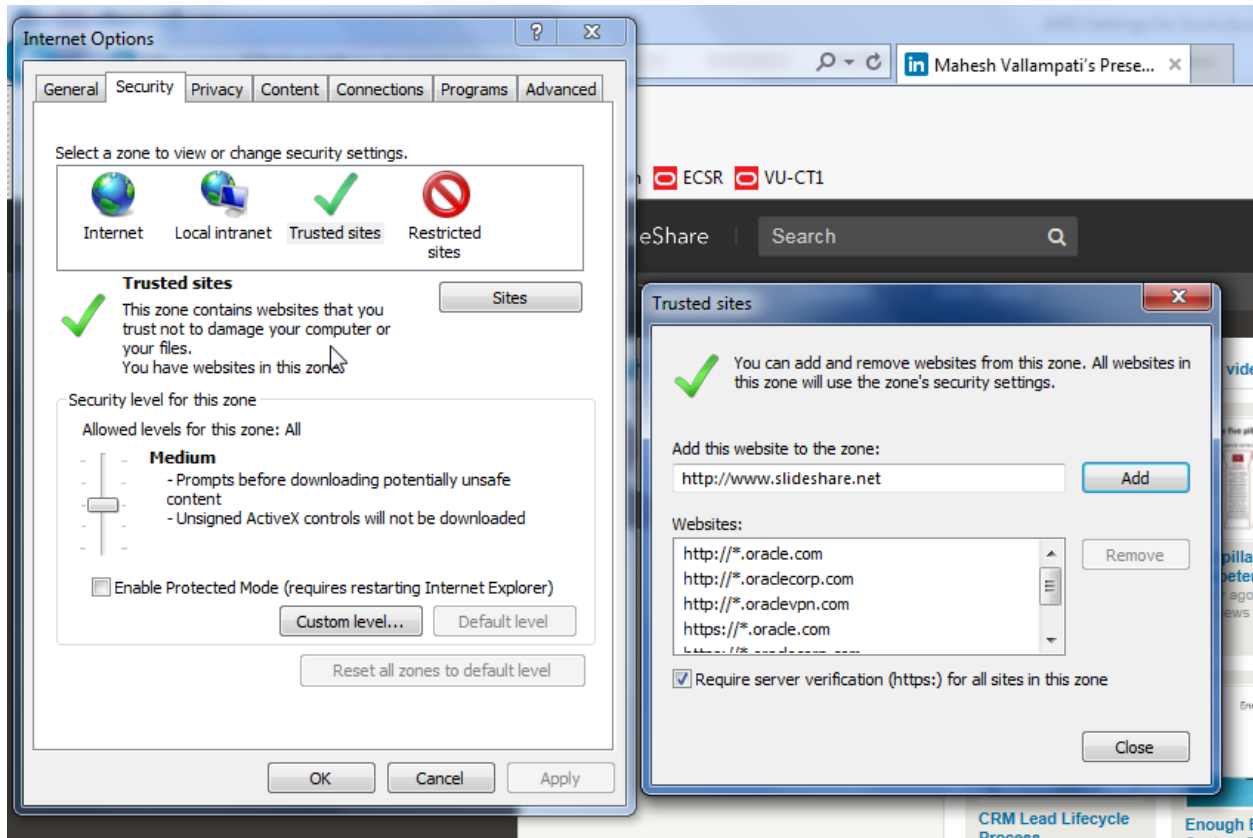


## Optional Steps

Step3:

Internet Explore Settings

Sometime Client IE Browsers may have a lot of security enabled to prevent attacks. You may want to consider moving the oraclecloud.com domain to the Trusted Sites area.



## Step 4:

### ADFdi Setting Checker

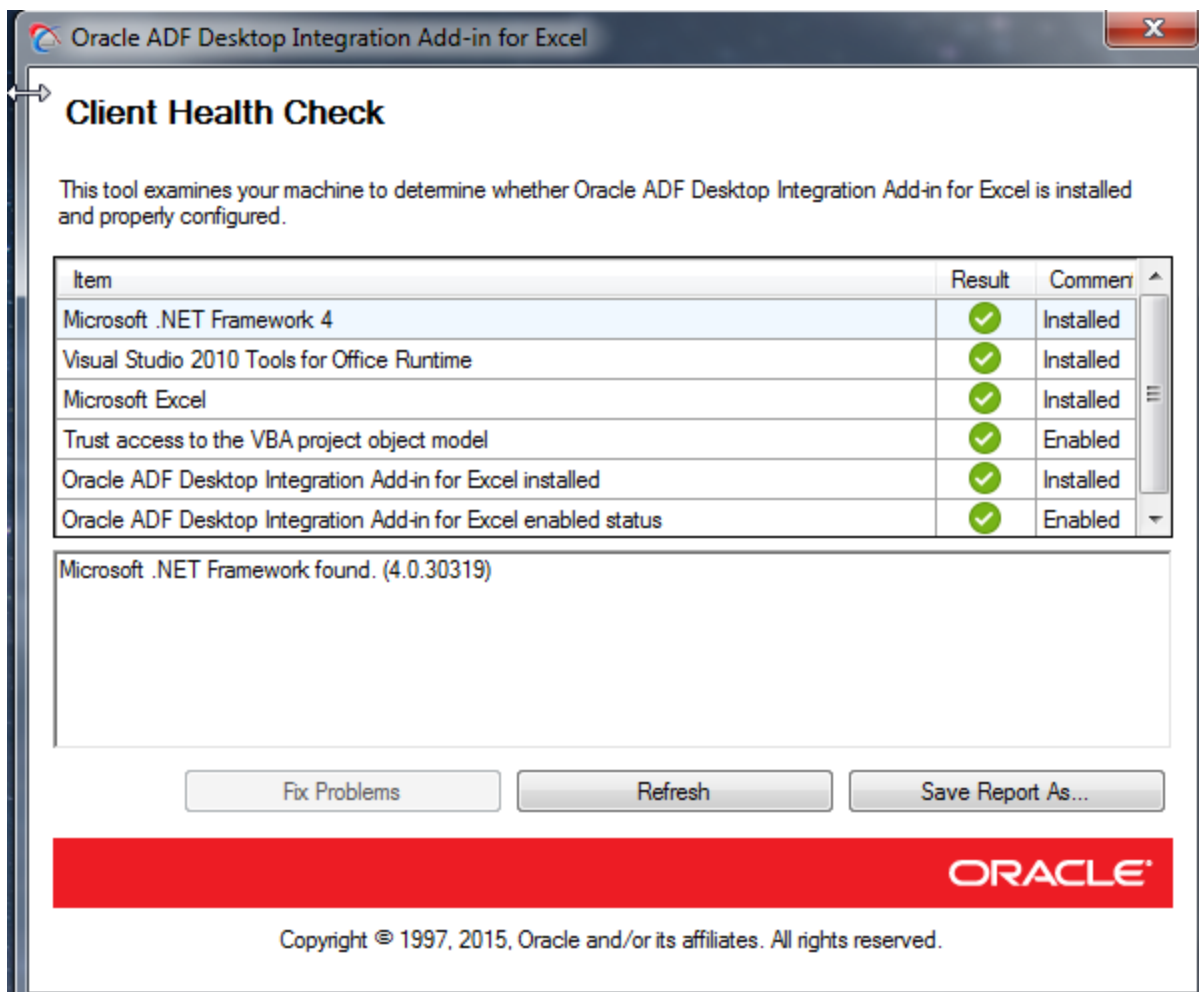
Oracle Support has created a tool to check ADFdi settings and is available as an exe. The exe should be downloaded and run and will list issues that can be resolved.

#### Exe Information

ADFdi client checking tool. This is an internal link. The link is [here](#).

This is available for Oracle employees only and may be used by Oracle Support.

#### Exe Health Check Output



Oracle ADF Desktop Integration Add-in for Excel

### Client Health Check

This tool examines your machine to determine whether Oracle ADF Desktop Integration Add-in for Excel is installed and properly configured.

Item	Result	Comment
Microsoft .NET Framework 4	✓	Installed
Visual Studio 2010 Tools for Office Runtime	✓	Installed
Microsoft Excel	✓	Installed
Trust access to the VBA project object model	✓	Enabled
Oracle ADF Desktop Integration Add-in for Excel installed	✓	Installed
Oracle ADF Desktop Integration Add-in for Excel enabled status	✓	Enabled

Microsoft .NET Framework found. (4.0.30319)

Fix Problems Refresh Save Report As...

**ORACLE**

Copyright © 1997, 2015, Oracle and/or its affiliates. All rights reserved.