

When SkyVU is implemented in July 2017, we will adopt a new approach to the **Chart of Accounts** that will enhance the quality of our data and simplify data management, which will improve financial reporting and allow for more efficient analysis.

This new multi-segment **Chart of Accounts** will replace the current Center and Account Number structure. Please refer to the screen shot of the Chart of Accounts entry window from Oracle Cloud along with the tables below for additional information about the use of these new segments.

**Charge Account** X

**Mandatory Segments**  
(required for all transactions)

Hide Segments

Entity  ▼

NetAssetClass  ▼

FinancialUnit  ▼

Account  ▼

SkyVU Chart of Accounts Segment Names and Descriptions

Entity	Net Asset Class	Financial Unit	Account
<ul style="list-style-type: none"> <li>A academic, administrative or other that owns assets, liabilities and net assets (e.g., Blair School of Music, Human Resources, Public Safety)</li> </ul>	<ul style="list-style-type: none"> <li>Indicates:                             <ul style="list-style-type: none"> <li>Use of funds</li> <li>Level of restriction for net assets (e.g., unrestricted, temporarily restricted)</li> </ul> </li> </ul>	<ul style="list-style-type: none"> <li>An area whose activities generate revenues and/or incur expenses</li> <li>Corresponds with <b>Work Unit</b> in the Organizational Structure</li> </ul>	<ul style="list-style-type: none"> <li>Describes the nature of the transaction (e.g., revenue, expense, asset, liability)</li> </ul>

Program  ▼

Activity  ▼

InterEntity  ▼

Future1  ▼

Future2  ▼

**Optional Segments**  
(use determined locally)

**System-Generated Segments**  
(no additional entry required)

OK Cancel

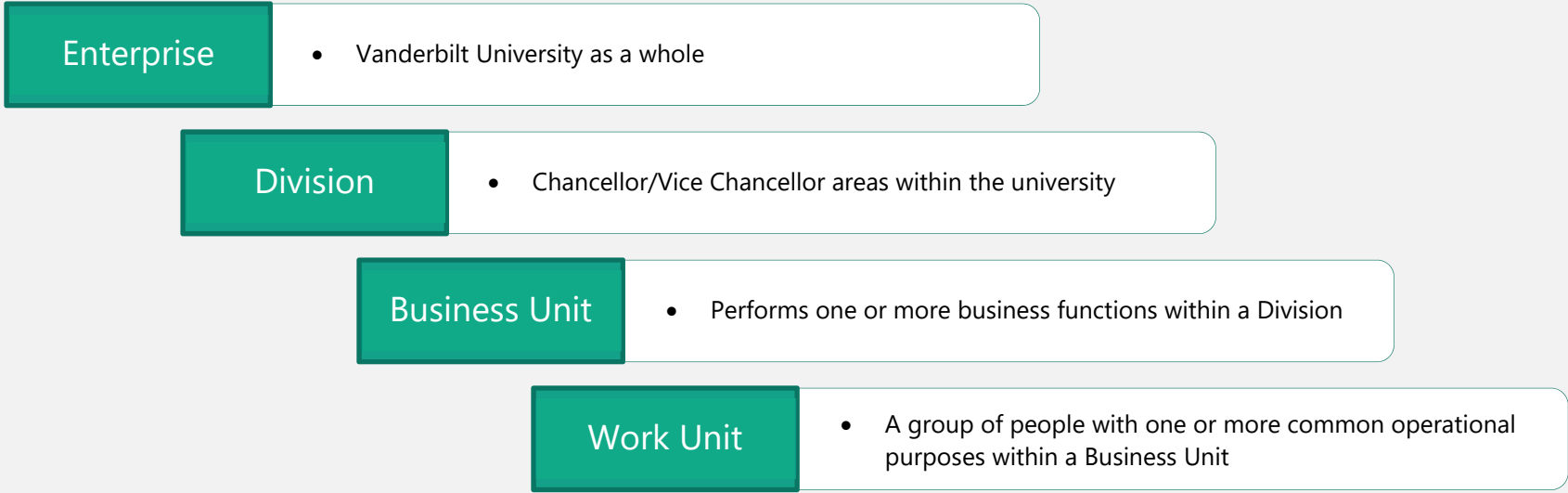
Program	Activity
<ul style="list-style-type: none"> <li>A set of related activities</li> <li>Typically are long-standing initiatives</li> </ul>	<ul style="list-style-type: none"> <li>A specific event or activity</li> </ul>

InterEntity	Future 1	Future 2
<ul style="list-style-type: none"> <li>Assigned by the system automatically when a transaction occurs between two Entity segment values</li> </ul>	<ul style="list-style-type: none"> <li>Reserved for future use</li> </ul>	<ul style="list-style-type: none"> <li>Reserved for future use</li> </ul>

Additional details, examples and draft values are available at: [www.vanderbilt.edu/skyvu/chart-of-accounts.php](http://www.vanderbilt.edu/skyvu/chart-of-accounts.php)

When SkyVU is implemented in July 2017, we will also adopt a new **Organizational Structure**. This new approach will replace the current Home Department structure, as we will begin to use a hierarchy structure that begins with Vanderbilt University as a whole and breaks down into **Work Units**. The diagram below provides additional information about the use of the new structure.

SkyVU Organizational Structure and Descriptions



**Work Units** in the Organizational Structure corresponds with **Financial Units** in the Chart of Accounts



Chart of Accounts segments