

**Development Associates, Inc.
University of Pittsburgh
Asociación de Investigación
y Estudios Sociales
(ASIES)**

**LA CULTURA DEMOCRATICA
DE LOS GUATEMALTECOS**

Tercer Estudio 1997

**Resumen
Idioma Kaqchikel**

Guatemala, enero de 1998

Consultores del Proyecto:

Dr. Mitchel Seligson
(University of Pittsburgh)

Dr. Malcom Young
(Development Associates)

Lic. Max Eduardo Lucas P.
(ASIES)

Licda. Dinorah Azpuru
(ASIES)

Implementado por Development Associates Inc.
y sus subcontratistas:
Universidad de Pittsburgh y
Asociación de Investigación y Estudios Sociales
(ASIES)

Como parte del Contrato
No. 520-0398-C-002293-00
de la Misión USAID/Guatemala

INDICE	Pag.
RUJUNAWÄCH RUB'ANIKIL RI AJIXIMULEW 1997	1
Ch'utirisanem	1
K'utik	1
Pa Rub'i ri Junawäch Rub'anikil	2
CHUPAM RI SAMÄJ YE'ELITÄJ JALAJQJ TAQ NA'OJ.	4
To'onik kichin Jamalil Junawäch chuqa to' onik chi re ri Nuk'ulem.	4
To'onik pa taq jalajoj taq moloj richin ri winaqilal.	7
Q'atb'äl tzij chuqa kuqub'ab'äl k'u'x kichin moloj taq samäj.	10
Q'atb'äl nuk'ulem.	12
K'ISIB'ÄL TZIJ	16
Ri winaqilal.	16
Ri q'atb'äl tzij	16
Ri q'aq'al nuk'ulem.	17
Ri junawäch.	18
Chutisoltzij	19



RUJUNAWÄCH RUB'ANIKIL RI AJIXIMULEW 1997.

Ch'utirisanem

K'utik

Pa 1,993 xtikir jun samäj pa Iximulew richin rutz'etexik ri ketamab'äl, ri kib'anikil konojel ri aj Iximulew chi rij ri junawäch. Ri samaj re' xkamulux pa 1,995 chuqa 1,997 richin rutz'etexik xu rujalon rub'anikil ri tinamit chuqa richin retamaxik achike xtib'anatej chuwaq kab'ij.

Ri samaj re' xb'an oxi' b'ey rik'in jun samajb'äl pa taq tinamit, chuqa ruq'a taq tinamit richin Iximulew. Ri samäj re' xb'an pa kaxlan, chuqa pa mayab' taq ch'ab'äl, pa Kichee, pa Kaqchikel, pa Mam chuqa pa Q'eqchi' jare' xkoje pa ruq'a ri ASIS, kek'a chuqa ri' xto'on pa ruch'ob'ik ri Development Associates Inc chuqa pa nimatijob'äl richin Pitt Sburgh, chuqa xk'oje pa ruq'a ri AID richin rutikirsaxik, runik'oxik, rub'anikil ri samäj.

Ri samäj re' xb'an pa 1,997, xb'an pa 1993 chuqa pa 1,995 xukusäx junan ri k'utunik kek'a chuqa ri' kere xye'exkan chikiwäch:

- Ri amaq'ela' chupam ri jalajoj taq moloj richin ri tinamit achel Moloj richin jun samäj, q'uchb'alb'äl, samajela', janila to'onik xb'an rik'in ri na'ojil nuk'ulem richin Iximulew ke k'a chuqa ri', ri na'ojil k'o ch'ik pa ruwi' k'atzinel richin junawäch.
- Ri to'onik nib'an chi re ri na'ojil nuk'ulem koma ri jalajoj taq moloj kitunub'anki' kik'in ri (potz', chituy chuqa q'atab'äl taq tzij).



Chupam ri samäj re' xb'än k'utunik chirij ri yeto'on kik'in ri jalajoj taq moloj ri yesamäj pa taq moloj winäq (chuqa nib'ix winaqilal), chi ke konojel ri amaq'ela' ri yeb'apon kik'in ri, q'atb'äl taq tzij, chuqa moloj pa taq samäj richin q'atoy tzij.

Ri wuj re' nuya' b'a rutzijoxik ri samäj xb'än pa 1,997. Ja k'a ri nikirayb'ej niketamaj ronojel rub'eyal ri samäj b'anun kan ri juna e ik'oynäq kan ützi nikiob' chupam ri wujb'äl chin ASIES.

Pa Rub'i ri Junawäch Rub'anikil

Richin niqetamaj rujunawäch rub'anikil jun tinamit achel ri Iximulew ützi ta niqaya' k'iq'ij ri ketamab'äl chuqa kib'anikil ri amaq'ela' chi rij ri:

- Ri yek'oje' apo kik'in pa taq na'ojil, roma nikitzi'ibaj ki pa taq moloj taq ch'ob', ri nikiya' rutzijol ri cha'oj, chuqa nikijuch' kan ruwäch wuj.
- Ri ketamab'äl chi rij ri nuk'ulem roma nib'än ri saqamaq'inik richin jun tinamit chuqa ch'aqachik taq moloj achel ri samachakulaj.
- Janipe' ri yek'oje'apo kik'in richin nikiya' chikiwäch, rojonel ri k'atzinel richin jun amaq', jun tinamit chuqa chupam ri Iximulew.
- Ri qetamab'al chi rij ri ch'ojib'al na'ojil chuqa ruchojib'al winaqi', rajowaxik nikib'än roma e amaq'ela'.

Ri man junawäch rub'anikil, ja ri' ri nuya' kow rub'eyal ri rub'anikil, roma ri' nuya' chi tzij ri:

- Ri winaqi' man kan ta nikiya' ruq'ij ronojel ri nib'an pa ruwi ri na'ojil achel:
- Manäq reto'on ta kik'in ri jalajoj taq moloj richin ri tanamit achel moloj richin k'iyirisanem, k'wayol taq b'ey richin tijob'äl, q'uchb'alb'äl, moloj richin kotzijay chuqa ch'aaq chik.



Manäq nikiya' ta pa kik'u'x richin ye to'on ta pa rucholajik ru samäj ri q'atoy tzij ke ka chuqa ri' manäq nikisujuj ta ri kiq'atb'äl tzij chuqa ri jalajoj taq moloj richin ri champomal.

- K'o ri manäq nikikoch' ta ri nikib'ij ch'aqachik k'o k'a ri nikikoch' b'a.
- K'o ri yon etzelal nikikisaj richin manäq chik oyowal ta ni b'anatej pa taq kachoch chuqa kik'in ri winaqi'.

Richin nik'iy ta ri junawäch rajowaxik chi ri amaq'ela, nikib'an ta:

- Yeto'on ta rik'in ronojel kik'ux, pa taq jalajoj taq samäj, ri nib'an pa taq amaq', pa taq q'atb'äl tzij

Tikikoch'o tikiya' ruq'ij ri jalajoj taq na'oj, ri nikiya' ri winaqi'.

Richin ri ruk'iyirisanem ri junawäch pa iximulew, rajowaxik chi ri winaqi' nikib'an ta jalajoj taq samäj achel ri

Fo'onik pa taq moloj richin ri amaq', pa taq samäj richin kotzijay, pa taq jalajoj taq samäj richin ri q'atb'äl tzij, chuqa ch'aqachik taq moloj richin ri champomal

Rajowaxik nikijuch kan ruwäch wuj richin ri cha'oj ri tinamit, chupam ri iximulew chuqa pa taq moloj na'ojil.

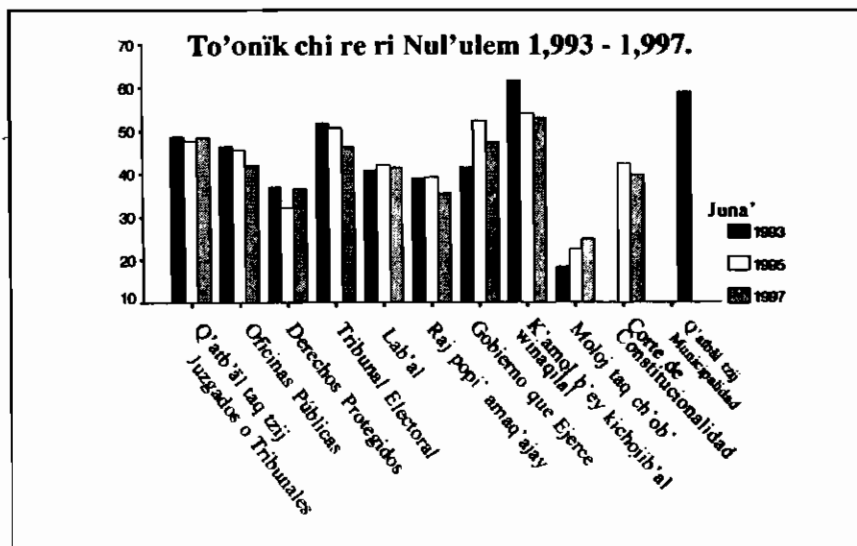
Rajowaxik chi ronojel ri nojib'äl, ri samäj kichin konojel ri amaq'ela' niqakoch' ta richin nichojmirsax ronojel ri k'ayewal mani rik'in etzelal.

CHUPAM RI SAMÄJ YE'ELITÄJ JALAJÓJ TAQ NA'OJ.

To'onik kichin Jamalil Junawäch chuqa to'onik chi re ri Nuk'ulem.

Xb'ix chi ri ruk'u'x ri samäj ja ri' ri to'onik kichin ri jamalil junawäch chuqa to'onik chi re ri nul'ulem chuqa ri junam rub'eyal ri k'o chikiwäch.

Ri to'onik chi re ri nuk'ulem ja ri ri' to'onik xuya' ri tinamüt chi re ri q'aq'al, chuqa nuk'ulem na'ojil, roma ja ri' k'o chupam ri cholk'aslemaal, chuqa jalajoj taq moloj richin ri saqamaq', roma k'atzinel ta ni chojmirsäx ta.



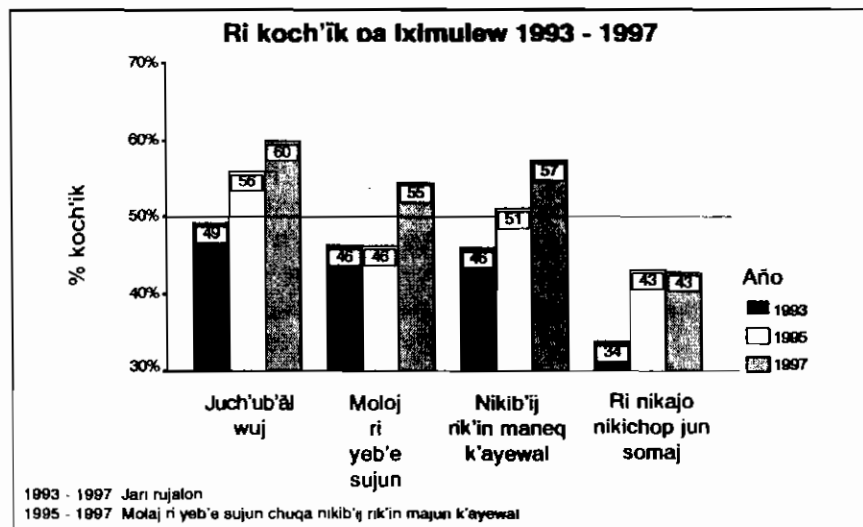
Achb'äl 1

Ri to'onik richin jamalil junawäch chuqa ri na'ojil ko chik k'o chupam ronojel utzuläj taq na'oj, richin nikiya' ruq'ij ri junawäch richin nib'än ta pa rub'eyal. Taq xk'is ri samäj pa ruwi' ri ka'i' solna'oj richin xeto'on, yojtikir niqetamaj janipe to'onik nuya' ri iximulew pa ruwi' ri junawäch.



Ri samäj xb'an pa 1997 nuya' chi tzij chi pa 1995 chuqa 1997, xjaletej ützt taq na'oj richin ri ruto'ik ri junawäch. Pa 1993 chuqa pa 1995 yalan xqa ri to'onik xapon pa 20%. Achel ri pa 1997 ri to'onik yalan xjote' xapon pa 24%. Ja k'a ru to'onik ri nul'ulem ri xk'utux chi ke ri winaqi' roma ri to'onik nikiya' ri jalajoj taq moloj nuk'ut chqawäch ri achb'äl, akuchi e k'o ri q'atb'äl taq tzij, k'amol b'ey, kich'ojib'äl winaqilal, chuqa pa q'atb'äl tzij roma chi ri' yeto'ox ri amaq'ela'

Ja k'a ri to'onik richin jamalil junawäch pa 1993 xapon pa kak'al kaji', pa 1995 xapon pa kak'al beleje, ja k'a pa 1997 yalan xjote xapon pa kak'al lajuj ka'i' chi re ri jun raqän. Ri to'onik richin ri jamalil k'o pa achb'äl .. roma konojel ri winaqi' xk'utux chi ke xunikajo', man nikajo ta ri winäq ri jantape yech'on itzel roma man niqa ta chikiwäch ri nub'an ri champomal, achel ri k'o kamin, ri e ik'oyneq kan, chuqa ri xke pe' nikijuch ruwäch wuj, yesujun, chuqa ye k'oje'apo kik'in ri moloj taq ch'ob, pa taq samäj richin cha'oj, roma nikiya' apo rutzijol pa taq talutzij chuqa pa taq taluwäch.



Achb'äl 2

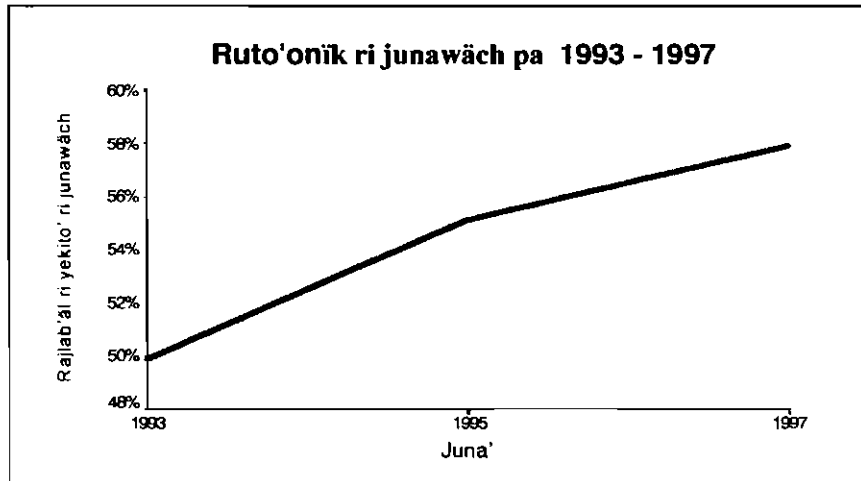


Ri jun molaj kaxlan taq winäq ri nikiya' ruq'ij ri junawäch chuqa yalan xnimär pa 1993 xapon pa kak'al, pa 1995 xapon pa kak'al lajuj jun, ja k'a ri pa 1997 xapon pa kak'al lajuj waqi'. Rik'in ri mayab' taq winäq junan xb'erya' chupam ri ox'i' juna' man xqa ta chuqa man xjote ta xk'oje' rik'in ri k'ak'al b'eleje, pa ruwi' jun raqän.

Ja ri to'onik xb'an chi re ri nuk'ulem man jun chuqa xjalatej ta, chupam ri ox'i' juna xk'oje' kan rik'in kak'al pa ruwi' ri jun raqen.

Kito'onik ri kaxlan taq winäq yalan num chikiwäch ri mayab' taq winäq. Pa 1995 ri to'onik kichin ri mayab' taq winäq xnimär xe ejunumatäj kik'in ri kaxlan taq winaqi', kek'a chuqa ri' xb'anatäj pa 1997 roma ru to'ik ri nuk'ulem.

Taq xjunumatej ronojel ri samäj richin ruto'onik ri nuk'ulem, ruto'onik ni na'ojil k'o ch'ik üt'z nawetamaj achike ri rujalon pa ruwi' ri to'onik ri junawäch pa 1993 chuqa pa 1997 üt'z natzet pa achb'äl ...



Achb'äl 3

K'ochik ch'aqachik taq samäj ri nich'on pa ruwi' rito'onik pa taq moloj, pa taq q'aq'al nuk'ulem. Chuqa ch'aqachik taq samäj ri yeqatz'et apo.

To'onik pa taq jalajoj taq moloj richin ri winaqilal.

Kamin ri qetaman chi rij ruk'aslem jun amaq' (jun ruxikin tinamit, jun ruq'a tinamit, jun tinamit) chuqa ch'aqa chik. Ja ri nib'ix chi re winaqilal, roma janila taq moloj, q'uchb'al'al uk'wey taq b'ey e k'o pa taq tinamit.

Chi rij ronojel ri samaj b'anum pe kik'in ri amaq'ela' taq rije' e k'o kik'in ri samaj ri nib'an pa tinamit chuqa pa taq jalajoj taq moloj richin ri winaqilal, ja ri taq k'o kuchuq'a yesujun pa ruwi' ri k'amol taq b'ey richin jun amaq', jun tinamit. Ri winaqilal ketaman achike rub'eyal achike rusamaj jun champomal nikiya' kuchuq'a richin nikib'an kisamaj pa ruwi' jun tinamit

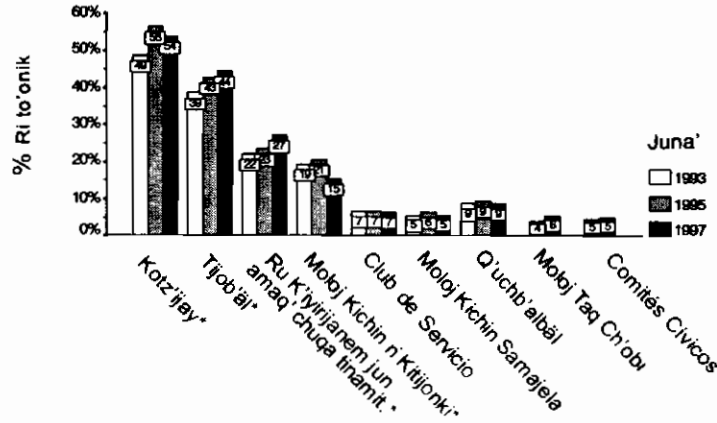
Pa rub'i ronojel ri oyowal xb'anatej koma ri lab'al, pa iximulew, man xuya' ta q'ij chi xkib'an ta kisamaj ri amaq'ela' pa taq moloj chupam ri winaqilal. Pa 1986 taq xtikir ri rub'eyal ri junawach chuqa rik'in ri runuk'ik tik'asaxa k'aslemal, ja ri taq ri amaq'ela' nikichop chik ri kisamaj rik'in jamalil richin yeto'on pa taq jalajoj taq moloj richin ri winaqilal.

Ri junawach achel atk'o pa jun moloj roma nuto' ri nuk'ulem chuqa nukoch' ri na'ojil. Ri winaqi' ri aj Iximulew ri e k'o pa taq jalajoj taq moloj chuqa ye to'on rik'in ri nuk'ulem richin yekoch'on. Ja k'a ri winaqi' ri man nikib'an ta ri jalajoj taq samaj chupam ri winaqilal manaq yeto'on ta.

Ri amaq'ela' yeto'on rik'in ri q'atoy tzij richin ri q'ath'al taq tzij ja ri taq yeb'apon pa taq moloj taq ye oyox koma ri q'atoy taq tzij richin nikesaj ki wuj chuqa taq yesujun. Ri to'onik re' nik'atzin richin nunimirsaj ri junawach, ja ri yalan e toyneq pe pa taq jalajoj taq moloj richin ri winaqilal, ketaman rub'eyal rusamaj ri q'atoy tzij ja ri manaq yeto'on ta man jun chike ta ketaman.



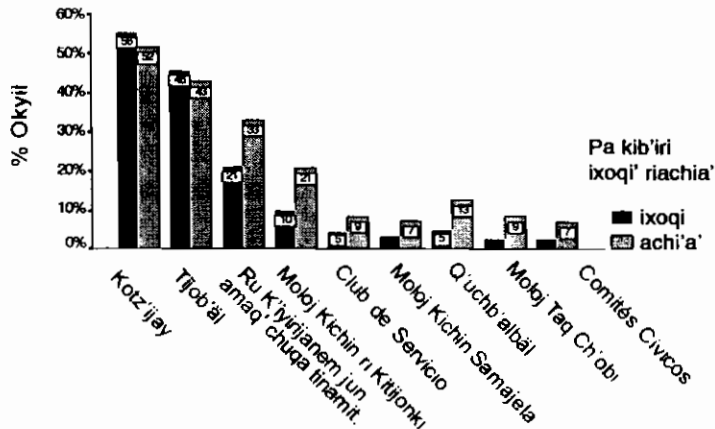
To'onik pa taq jalajoj taq moloj chupam ri winaqilal pa 1993 - 1997.



Pa 1993 majun xk'utuxta ri molaj taq ch'ob' mayta'ka chike ri aj Comité Civico

Achb'äl 4

Ri to'onik pa taq jalajoj taq moloj chupan 1,997 pa kib'ri ri ixoqi', ri achi'a', chuqa ri jalajoj taq samäj richin jun moloj.



achb'äl 5

Chupam jun tinamit yalan b'a ok ri e k'o pa taq moloj chupan jun winaqilal. Jun 47% ri e k'o pa jun, ka'i' moloj. Pa 1993 k'a pa 1997 xk'iyix ri e k'o chupam taq moloj kichin, tijob'al, kotz'ijay chuqa ch'aqa chik taq moloj richin ruk'iyirisanem jun amaq', ja ri e k'o pa taq moloj kichin samajela', q'uchb'alb'al man jun xujel ta.

Ri e k'o pa taq moloj man jun rujalon ta ja k'a ri mayab' winaq yalan e k'o chupan ri moloj kichin kotz'ijay. Ri kaxlan taq winaq ri yalan e k'o pa taq moloj richin yeto'on pa taq tinamit.

Chupan ri moloj kichin taq tijob'al chuqa kichin kotz'ijay, ri ixoqi' yalan yeto'on chikiwach ri achi'a', xa xe k'a pa taq moloj kichin samajela' man kan ta yeto'on. Ja ri ixoqi' ri e k'o pa nimatijob'al junam yeto'on kik'in ri achi'a' pa taq q'uchb'alb'al.

Ri rajlab'al jun tinamit ri yeto'on pa taq moloj kichin tijob'al, moloj richin jun samaj chuqa ch'aqa chik xjote' eqal eqal: 1993 = 30%, 1995 = 43%, 1997 = 44%.

Chuqa xjote' ja ri yeto'on pa taq moloj richin ruk'iyirisanem jun tinamit, 1993 = 22%, 1995 = 23%, 1997 = 27%

Chupam ri to'onik pa taq moloj kichin samajela' chuqa pa taq q'uchb'alb'al man jun xjalatej ta.

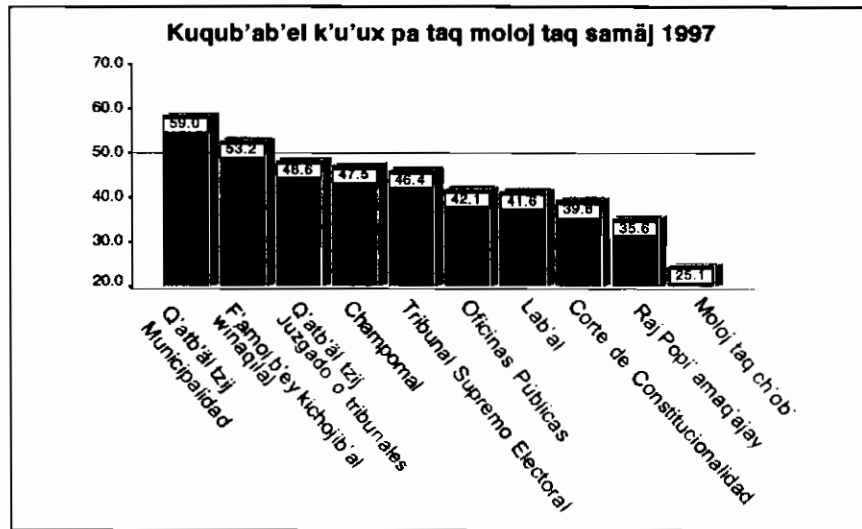
Ja ri yeto'on pa taq moloj richin na'ojil man kan ta janipe xjalatej. Richin nikijuch' ruwach wuj. Kitz'ib'an k'i 1993 = 77%, 1997 = 78%. Ja ri e k'o chupam ri moloj taq ch'ob': 1995 = 8%, 1997 = 13%.

Ri mayab' taq winaq ri yeto'on pa taq samaj kichin na'ojilaj, ache'el ri e k'o pa jun na'ojil, chuqa nikiya' rutzijol ri na'ojil, richin nikijuch' ruwach wuj, yalan xjote', pa 1993 = 5%, 1995 = 7%, 1997 = 12%.



Q'atb'äl tzij chuqa kuqub'ab'äl k'u'x kichin moloj taq samäj.

Chupan ri samajib'äl xk'utux chi ke ri winäq chojchij ri yalan kiki k'ulb'ej. 1 Q'atb'äl tzij, 2. K'omol b'ey kich'ojib'äl winaqilal, 3. Q'atb'äl taq tzij, 4. champomal, 5. Tribunal Supremo electoral, 6. champomal samajay, 7. Lab'al, 8. Corte Costitucionalidad 9. Rajpopi' amaq'ajay, 10. moloj taq ch'ob'. Chi ke ri lajuz, jalajoj taq moloj, ri q'atöy taq tzij chuqa ri K'amol b'ey kich'ojib'äl ja ri ri' yalan nikikulb'ej ri winäq. achb'äl 6



achb'äl 6

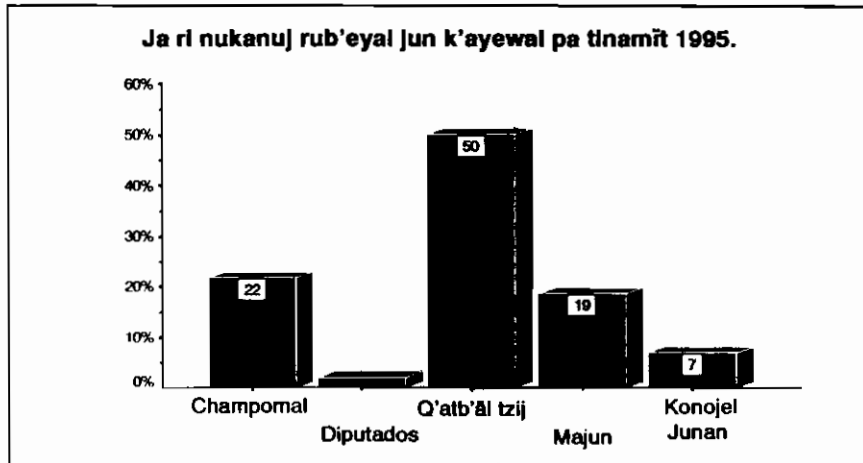
Ri ajlab'äl richin kuqub'ab'äl k'u'x chupam ri nuk'ulem q'aq'al nuk'ut chqawäch pa achb'äl 7. Ri rajlab'äl yalan niqa roma xkib'ij manäq nikiya' ta kik'u'x rik'in ri nuk'ulem q'aq'al.

Rajlab'äl richin kuqub'ab'äl k'u'x pa taq q'atb'äl taq tzij richin q'aq'al.

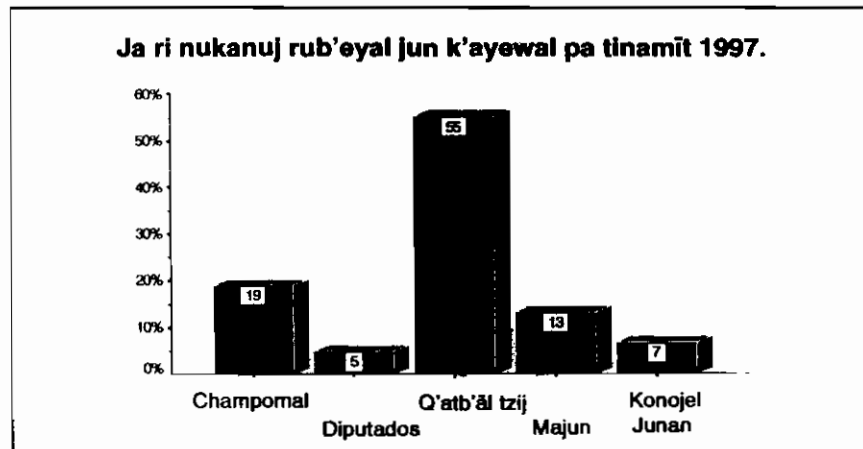
	1993	1995	1997
Majun	25	23	18
Man Kanta	52	58	62
Jamila	23	18	20

Achb'äl 7

Pa jun tinamit ri yalan yon ruq'ij roma nikikanuj rub'eyal jun k'ayewal ja ri' ri q'atb'al tzij. Pa 1995 chuqa 1997 xnimär b'a nikik'ut chqawäch ri achb'al waqxaqi' chuqa b'eleje'.



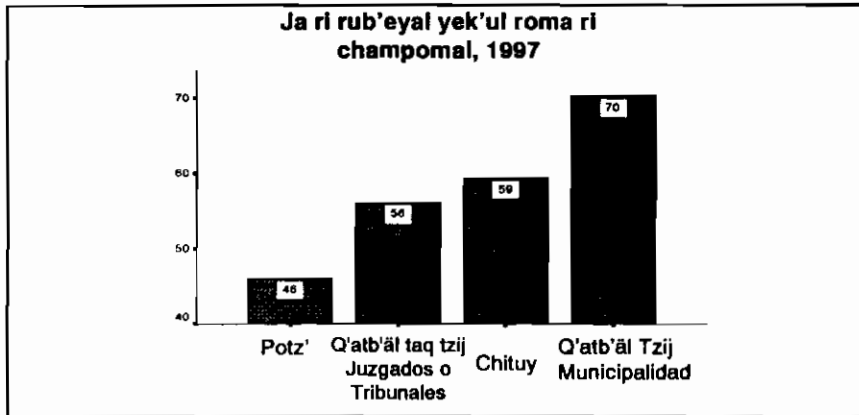
Achb'äl 8



achb'äl 9



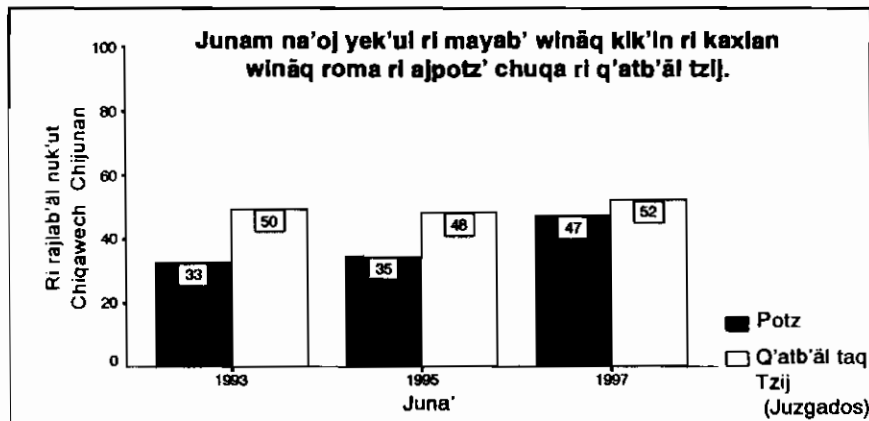
Chike ri wināq chuqa xk'utux achike rub'eyal ye k'ul pa taq, q'atb'äl taq tzij, pa potz', pa q'atb'äl taq tzij, chuqa pa chituy. Ja ri kuchi ützt yek'ul, ja ri pa taq q'atb'äl taq tzij. achb'äl 10



achb'äl 10

Q'atb'äl nuk'ulem.

Xk'utux xu ri ajpotz' chuqa ri q'atb'äl taq tzij junam na'oj yek'ul ri mayab' taq wināq kik'in ri kaxlan taq wināq, yalan ützt, yalan itzel, junam. Ri achb'äl ! nuk'ut chuqawäch rixkib'ij chi b'ama nik'aj chi re ri tinamit junam na'oj yek'ul ri mayab' wināq kik'in ri kaxlan wināq. Ja k'a ri ajpotz' janila xujel runa'oj richin yeruk'ul. Pa 1993 chuqa 1997 chi re ri 33% xjote' pa 47%.



achb'äl 11



Ja ri kaxlan wināq nikitiz'et chi ri nuk'ulem junam na'oj yekik'ul ri winaqi' ja k'a ri mayab' wināq ri xk'utux chi ke man nikitiz'et . Ja ri nuk'ut ri achb'äl 12

Ri mayab' wināq chuqa ri kaxlan wināq xkitiz'et chi junam na'oj nikikul ri winaqi', koma ri ajpotz, chuqa ri q'atb'äl taq tzil

**Toa kywitz qwnaqll ex moos kyse'n kyk'ujlalll kyu'n
Xq'uqal ex kyu'n xtlsb'al**

Jari yek'ul	Mayab' wināq				kaxlan wināq		Total	
	Jari k'o ki tzi'aqb'äl		Jari ketoman achike riki b'anikil					
	Potz' Q'atb'äl taq Tzij (Juzgados)	40	Potz' Q'atb'äl taq Tzij (Juzgados)	49	Potz' Q'atb'äl taq Tzij (Juzgados)	54	Potz' Q'atb'äl taq Tzij (Juzgados)	53
Jari junan ye k'ul	29	40	42	49	48	54	47	53
Ri mayab'utz yek'ul	1	1	2	2	3	3	2	2
Ri kaxlanutz yek'ul	70	58	55	49	49	43	50	45

achb'äl 12

Ri 70% xk'utux chi ke ri wināqi' ri k'o kitzyaqb'äl mayab', xkib'ij chi yalan itzel n'aoj xek'ul koma ri ajpotz', achel ri kaxlan wināq man jun ke ri' ta.

Chupam ri oxi' samaj xb'an xk'utux ri q'atoy taq tzij janila ye kito' ri b'eyoma xikib'ij: chi "ja" "man jantape ta", manāq, man wetaman ta. Ja ri k'o chupam ri achb'äl # Janila chi ke ri aj iximulew xkib'ij chi riq'atb'äl taq tzij janila yekito' ri b'eyoma.

Chi re ri nuk'ulem q'aq'al nikil jun k'ayewal ri wināq ri xk'utux chi ke, richin ri sujunik nib'än kik'in ri q'atoy taq tzij pa ruwi' ri kamisanik chuqa ri man ützt ta nikib'än.



**Ri na'oj yek'ulum ri q'atb'äl taq tzij chi ke ri b'eyoma.
(ajlab'äl)**

	1993	1995	1997
-Ri q'atb'äl taq tzij ri janila yekito'	75	77	81
-Ri q'atb'äl taq tzij ri k'ob'ey yeto'on	17	14	13
-Ri q'atb'äl taq tzij ri maneq yeto'on	8	9	6

Ach'b'äl 13

Chupam ri samajb'äl chin 1997 xk'utux. chi man k'ayew ta, k'ayew, chuqa yalan k'ayew, nasujuj ri man ützt ta nib'än, ri ajpotz', chi ke ri q'atoy taq tzij chojche' xe k'utux yalan e b'a ok ri xkib'ij chi man k'ayewta, b'ama chi re ri 60% nikib'ij chi k'ayew, yalan k'ayew. achb'äl 14

**K'atzinel richin nasujuj jun kamisanik chuqa
ri man ützt ta nib'än.**

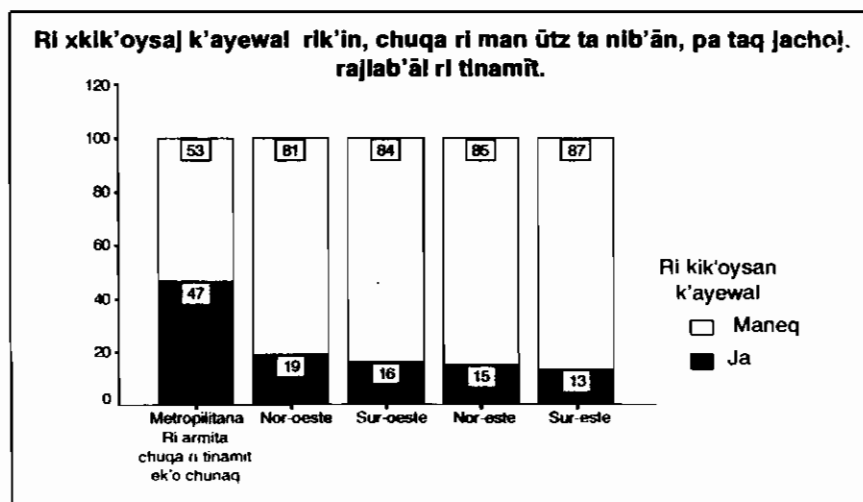
	Jun tinamit	Ri ki k'oysan K'ayewal	Ri nikikusaj chuqa ye ch'ob'on rik'in ri ruk'ulem*
-Man k'ayewta	28	29	29
-K'ayew	45	45	46
-Yalan k'ayew	13	16	11
-Maneq retamanta	11	10	13

* Chupam ri jun juna xik'o kan ri je xkib'ij chi jun chi ke k'ach'alal xkamisex roma ri xesujun kik'in q'atoy taq tzij.

achb'äl 14

Pa ruwi` ri man ützt ta nib'än, jun solna'oj yalan k'atzinel, roma ri k'ayewal re' man xtuya' ta q'ij chi jun tinamit nuya' ruk'ux richin ru to'onik ri junawäch chuwaq kab'ij. Ri samajb'äl nub'ij chi chupan jun jay ri 20% richin jun tinamit, jun chi ke xuk'oysaj k'ayewal rik'in eleq' chupam jun juna ik'oynäq kan. Pa iximulew, chuqa naqaj ri iximulew, ik'oynäq b'a chi re ri nik'aj tinamit ri 47% xkik'oysaj k'ayewal chi rij ri kamisanik. achb'äl. 15

Ri 90% ri winäq xk'utux chi ke jujik nikib'ij chi ri q'aq'al nuk'ulem yalan eqal nisamäj, achb'äl 16 e k'iy yeb'in chi yalan xeruto' ri kaxlan taq winäq chikiwäch ri mayab' taq winäq. Chupam ri 1993 chuqa 1997 xkitz'et chi ri ajpotz', ri q'atb'äl taq tzij üt zek'ul ri winaqi'. Roma ri' q'a'qal nuk'ulem ronojel ri samäj b'anumpe' eqal nisijam pe.



achb'äl 15

Ruchojmirsanik rusamäj ri nuk'ulem.

	Ronojel ritinamit	Ri kik'oysan K'ayewal	Ri niki kusaj ri nuk'ulem
Chanin	10	8	9
Man chaninta	90	92	91

achb'äl 16

* Chupam ri jun juna xik'o kan rije xkib'ij chi jun chi ke k'ach'alal xkamisex roma ri' xesujun kik'in q'atoy taq tzij.



K'ISIB'ÄL TZIJ

Ri runuk'ik' tik'asäx k'aslemal pa iximulew nuya' jun utzuläj b'eyal roma ri jun tinamit ruk'oysampe k'ayewal, roma ri' rajowaxik niqa ch'op jun utzuläj b'eyal richin rijunqwäch. Achel ri runuk'ik' tik'asäx k'aslemal nuya' rutzijol, man nub'ij ta achike rajowaxik nusamajij jun nuk'ulem. Roma ri winaqi' ri ketaman achike k'o chupam ri runuk'ik' tikk'asäx k'aslemal. Achike rajowaxik rub'eyal nuk'wäx richin nik'oje' jun junawäch pa iximulew.

Chupam ri samäj re' nuk'ut chi k'o rub'eyal ri nisamjix ri jun junawäch, kik'in ri tinamit, roma ri amaq'ela' man kan ta nikiya' kik'ux chi rij ri k'amol taq b'ey richin ri nuk'ulem. ke k'a chuqa ri' xtz'etetej chi ri mayab' winäq, k'imb'a nikiya' yalan kik'u'x chi re ri junawäch, chikiwäch ri kaxlan winäq.

Ri winaqilal.

Pa latinoamérica man jun to'onik nikib'an ri tinamit pa taq moloj richin nik'oje ta ri junawäch. Ri samaj xb'an pa iximulew xetz'etetej xhi e k'iy e k'o pa taq moloj richin ri winaqilal. Pa iximulew yalan meh'el k'o roma ri' ri amaq'ela' man kan ta nijame kiwäch roma nikikusaj ronojel q'ij richin nikich'ek ki wäy. Pa 1993 ri 29% chi ke ri aj iximulew manäq e k'o ta pa taq moloj richin winaqilal, ja k'a ri 1997 xqa pa 24%. Ri jalajoj taq moloj richin ruk'iyirisanem jun tinamit ja ri ntok richin rutz'etik ri k'iyirisanem, roma janila xjote' ri to'onik pa 1993 chuqa 1997.

Ri solna'oj chi rij jalajoj taq b'anab'al (etnicidad) janila k'atzinel pa iximulew. Ri to'onik pa taq moloj richin ri winaqilal ri mayab' winäq chuqa ri kaxlan winäq man kan ta janipe rujalon.

Ri q'atb'al tzij

Chupam ri samäj xb'an yalan k'atzinel roma xilitäj chi ri aj iximulew janila nikiya' kik'u'x chi rij ri q'atb'al taq tzij, roma ri' richin chanin nik'oje' ri junawäch k'atzinel chi ronojel ri to'onik nib'an kik'in ri tinamit,



kek'a chuqa ri' xqetamaj chi ri q'tab'al taq tzij janila ützt yekik'ul ri amaq'ela' richin nikikanuj rub'eyal jun k'ayewal pa tinamit, roma ri to'onik nib'an pa taq moloj na'ojil richin ch'aoj chi ke ri q'atoy taq tzij roma k'o b'ey ye'elesäxpa taq kisamäj.

Ri q'aq'al nuk'ulem.

Pa 1996 k'o chik jun samäj xb'an pa iximulew nub'ij kere': Ri amaq'ela' nikib'ij chi k'atzinel chi k'o yechajix chuqa nuya' rub'ixik rub'eyal ri junawäch.

Taq manäq xkek'oje ta ri yechojmirsan, ri samaj nib'an pa jun tinamit chuqa jun q'aq'al nuk'ulem nikusäx ri sujunik, roma ri nuk'ulem k'o chi nusamajij richin nik'oje' ri junawäch. Chuqa nub'ij chi yalan xjote' ri kamisanik roma ri' ri rajowaxik chi k'o nichajin ruk'aslem jun winäq, pa taq achoch, pa taq samäj, pa taq amaq'. Kimb'a yekito' ronojel ri man k'o ta pa junawäch chuqa nik'oje ta jun champomal lab'al.

Pa rub'i ri solna'oj chi re ri kamisanik, ri q'aq'al nuk'ulem janila ruq'ij pa iximulew, roma ri nuk'ulem na'ojil nukanuj rub'eyal roma k'imb'a ri winäq man nikiya' ta chik kik'u'x chi rij ri tinamit chuqa kimb'a yekito ri nu'kulem.

Nikib'ij chi ri 90% chi re ri q'aq'al nuk'ulem yalan eqal xesamäj chuqa janila yekajo' ri b'eyoma'. Ri winäq nikib'ij chi pa 1993 k'a pa 1997 yalan b'a'ok rujalon ri kina'oj, ri ajpotz' chuqa ri qath'al taq tzij, taq yek'ul ri winäq. Ri winäq kiyo'on kik'u'x chi rij ri nuk'ulem roma kitz'eton chi ye'axex chuqa ützt yek'ul.

Chupam ri oxil juna ik'oyneq kan b'anun jalajoj taq samaj. Richin ützt ta rusamäj nuib'an ri q'aq'al nuk'ulem. . xelesäx rutzijol ri nib'an utzil ri codigo penal .. xe tijox ri q'atoy taq tzij ... xetijox ri ajpotz'. Pa ruwi' ri samäj b'anunpe' nitz'etetej chi eqal, eqal niwachimpe.

Ri winäq man jun rujalon ri nikiya' kik'u'x chi rij ri q'aq'al nuk'ulem, roma nikitset ri winäq chi ri ajpotz' rujalon ri yek'ul, ja k'a ri q'ath'al taq tzij xa b'a ok rujalon.



Pa ruwi' ri samäj rajowaxik, yetajin nikibän rub'eyal jun nuk'ulem richin nisamajix rik'in ronojel k'u'x.

Ri junawäch.

Ri to'onik xb'än chi re ri nuk'ulem pa 1997 man jun xujel ta ri xb'än pa 1995, chupam chuqa ri juna ri koch'ik janila xjote'. Ronojel ri to'onik chi re ri junawäch xjote' chi re ri 50% pa 56% chupam ri 1993 k'a pa 1997.

Taq ri winäq yeto'on kik'in ri jalajoj taq moloj richin ri winaqilal, ke k'a chuqa ri' ninimär ri koch'onik. Roma ri to'onik nib'än chi ke ri winaqilal chupam ri jalajoj taq moloj. Ja ri yalan to'onik nikib'än, nikib'än chi ri nuk'ulem.

Janila k'atzinel ri to'onik bib'än chi re ri q'aq'al nuk'ulem. Richin nuk'isb'ej ri samaj nub'ij chiqe chi man jun ütztä nijał ta ri condiciones socioeconómica., ronojel re' k'imb'a chuwaq kab'ij nunimirsaj ta ri pwäq richin ütztä rub'eyal nuk'wex ronojel ja k'a re' nuto' ri junawäch pa taq moloj richin ri winaqilal chuqa ri niye'ex ruk'u'x chi rij ri q'aq'al nuk'ulem. Taq xk'isb'ex ri samäj ütztä ta ri' yalan ta xkito' ri q'atb'al tzij, k'iy ruwäch ri na'ojil, k'ochik chuqa ruto'ik ri nuk'ulem.

Chutisoltzij

amaq'ela'
 amaq'
 iximulew
 uk'wey taq b'ey richin tijob'äl
 kotzijay
 k'amol b'ey kich'obj'al winaqilal

koch'ik tolerar,
 K'isb'äl tzij
 k'iyirisanem
 champomal
 chojib'äl na'ojil
 cholk'aslemal
 ch'ituy
 Ch'utirisanem
 jamalil junawäch
 Jachoj
 lab'al
 moloj richin jun samäj
 moloj winäq
 moloj taq samäj
 moloj taq ch'ob'
 nuk'ulem
 nuk'ulem na'ojil
 nuk'ulem q'aq'al
 na'ojil
 na'ojil koch'ik
 q'aq'al
 q'atb'äl taq tzij

q'uchb'alb'äl
 raj popi' amaq'ajay
 rub'anikil
 rujunawäch

Glosario

Ciudadano
 Comunidad
 Guatemala, país de Guatemala.
 Patronatos de escuelas
 Iglesia
 Procurador de los Derechos
 Humanos
 Tolerancia
 Conclusion
 Desarrollo
 Gobierno
 derechos políticos
 Constitución Política
 Ministerio Público
 Resumen
 Libertad de democracia
 Región
 Militar
 Comité
 Comunidades
 Instituciones
 Partidos políticos
 Sistema
 Sistema Político
 Sistema de Justicia
 Política
 Tolerancia política
 Poder político
 Juzgados, tribunales.
 Municipalidades
 Cooperativa
 Congreso de la república.
 Cultura
 Democracia, democrática



ruknuk'ik tik'äx k'aslemal
samajela'
samach'akulaj
saqamaq'
saqa maq'inik
solna'ojaspecto,
taluwäch
talutzij
potz'
winaqilal

Acuerdos de paz firme y duradera
Sindicatos
Organismo
Estado
Gobernar
Tema
Televisión
Radio
Policía
Sociedad civil