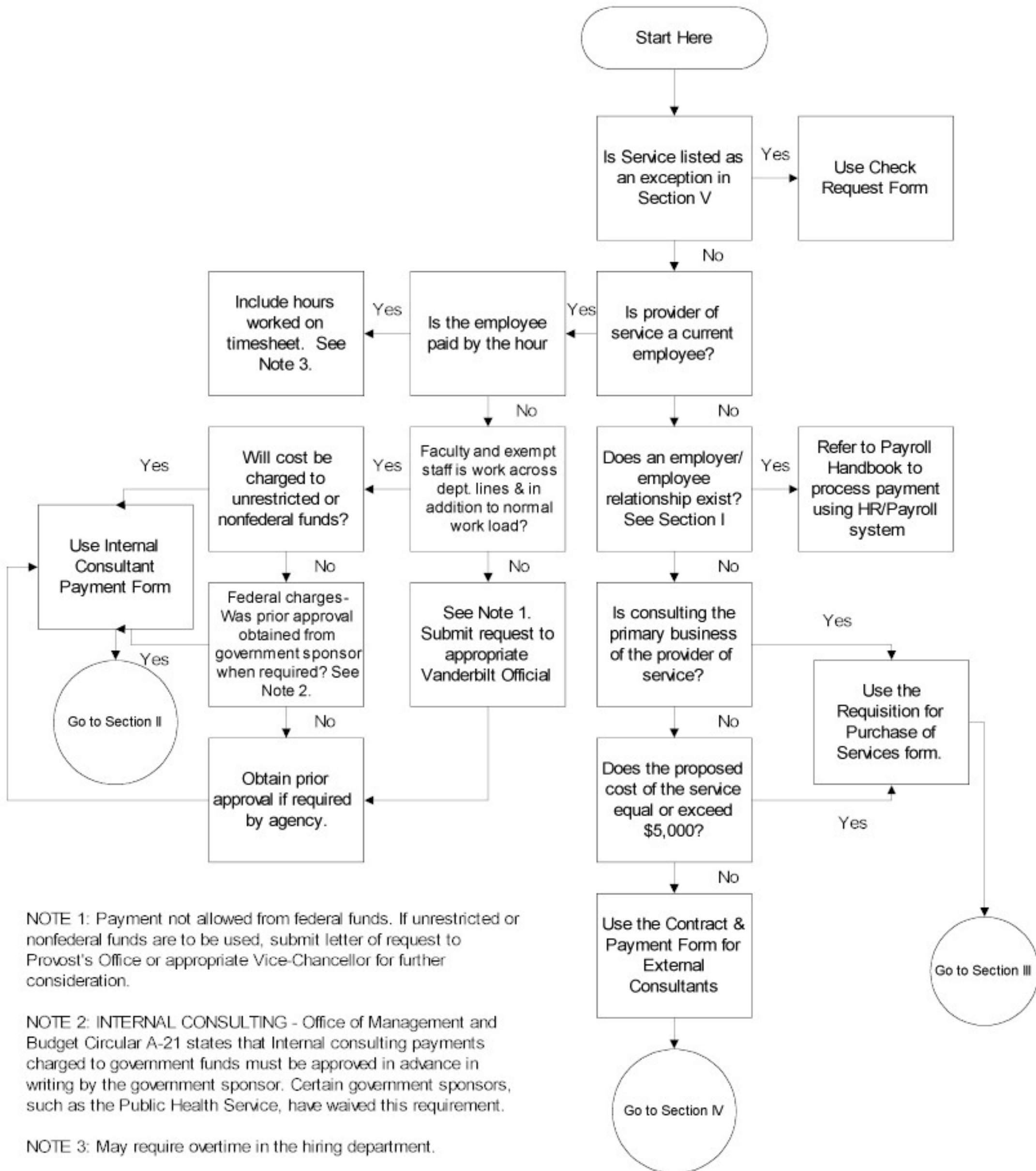


Choosing the Correct Payment Method



NOTE 1: Payment not allowed from federal funds. If unrestricted or nonfederal funds are to be used, submit letter of request to Provost's Office or appropriate Vice-Chancellor for further consideration.

NOTE 2: INTERNAL CONSULTING - Office of Management and Budget Circular A-21 states that Internal consulting payments charged to government funds must be approved in advance in writing by the government sponsor. Certain government sponsors, such as the Public Health Service, have waived this requirement.

NOTE 3: May require overtime in the hiring department.